



1-3/4 INCH

RIGHT HAND

50 VANES WITH TAPE

***SPIN-WING VANE® ... Tried and True
Used To Take The "GOLD" Since 1984!***

**SPIN-WING VANES WERE USED TO TAKE ALL
24 OF 24 MEDALS IN THE 1996 OLYMPICS
& 23 OF 24 MEDALS IN THE 2000 GAMES!**

ELITE SPIN-WING VANES

The "ELITE" features a rear sloping hook that traps air on the outside of the shaft. If the archer makes a bad release, the arrow will stabilize quickly out of the bow. Additional drag is at the beginning of the shot (where it is needed) then reduces so that the total drag is the same as an original Spin-Wing Vane of the same size. This is a major improvement in drag technology that no other fletching has. These vanes are outstanding for carbon and light to medium weight aluminum arrows and shoot excellently out of recurve and compound bows.

Available Sizes: 1-3/4", 2-3/16", 3-7/8"

Available Colors: Red, White, Blue, Yellow, Black, and Green Metallic
Please specify right or left handed when ordering!

SPIN-WINGS are also available in ORIGINAL and HUNTER sizes.

RANGE-O-MATIC ARCHERY COMPANY
20625 30 Mile Road • Ray, MI 48096 U.S.A.
Phone: (586) 749-8622 • FAX: (586) 749-6721
Web Site: www.spin-wing.com • E-mail: rangeomatic@earthlink.net

FLETCHING INSTRUCTIONS FOR ELITE

Right Hand

Revised 7-02

1. Clean arrow shaft with powder cleanser. Rinse shaft with warm water and dry thoroughly. This removes old fletching lines. Old tape can be removed with razor blade if needed.
2. Using a liquid extra fine point pen, a straight line clamp and fletching jig, mark three location lines 120° apart for the length of the vane straight to the shaft (**DO NOT OFFSET**) and an aft mark one inch from the bottom of the nock. See Figure 1.
3. Take a strip of tape and peel back a small portion of the plain paper liner (approximately 3/4 of an inch) and attach to the rear end of arrow on locating line, 1/8 of an inch past mark. Remove the remaining liner and contact the front end on the locating line. Gently rub down tape. Put all three pieces of tape on arrow before applying vanes. See Figure 2.
4. Remove liner to expose adhesive tape. First contact the rear end of a vane on the locating line at aft mark, then the front end. Firmly rub down vane to arrow. Rub off excess tape at both ends of vane. When all three vanes are fletched, use 3/16 inch black tape to wrap 1-1/2 times around arrow shaft at both ends of vanes. Contact 1/8 inch at front end and 1/16 inch at rear end of vanes. See Figure 3.
5. Rotate nock for proper vane clearance with fletchings. See Figure 4.
6. Drag is the same for all colors. I suggest a different color cock vane for positive location.
7. Right hand finger shooters should use RH vanes. Release shooters can use RH or LH vanes. Looking from nock end of arrow RH Spin-Wings will rotate in a clockwise rotation.

FIGURE 1.

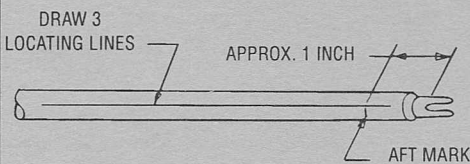


FIGURE 2.

FOR R.H. VANE
PUT TAPE ON
RIGHT SIDE
OF LOCATING
LINES

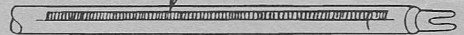


FIGURE 3.

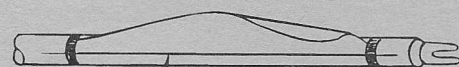
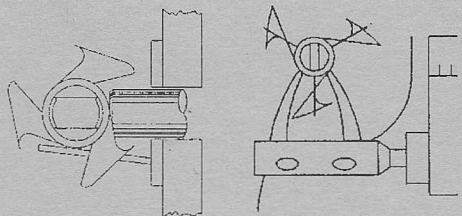


FIGURE 4.



PATENTED